

Wallaby Series

Board Level Repair

Service Manual

HTC Proprietary

Confidential Treatment Requested

November 27, 2002

HTC Corp.

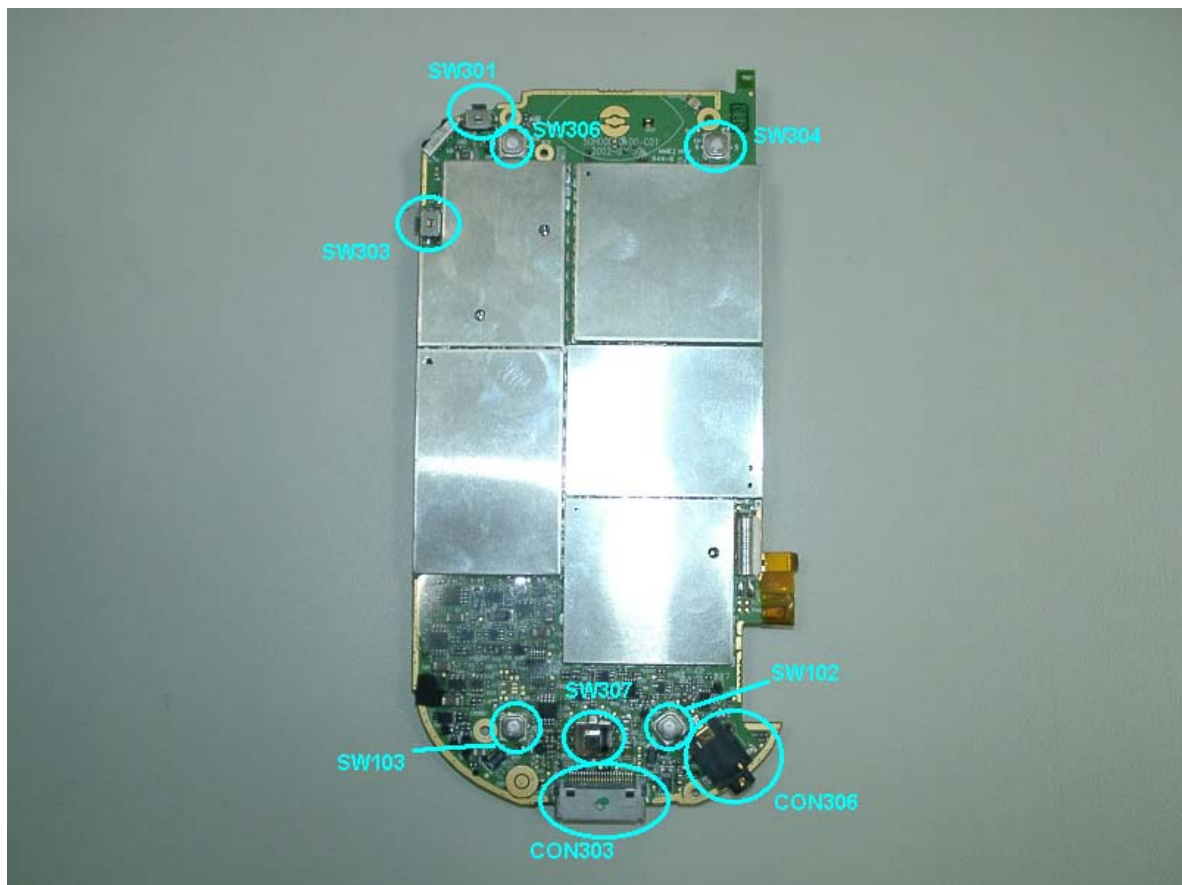
Engineering Mobility

A. Components to be replaced

I. **Main Board:** **ONLY** the following items have been allowed to replace for M/B.

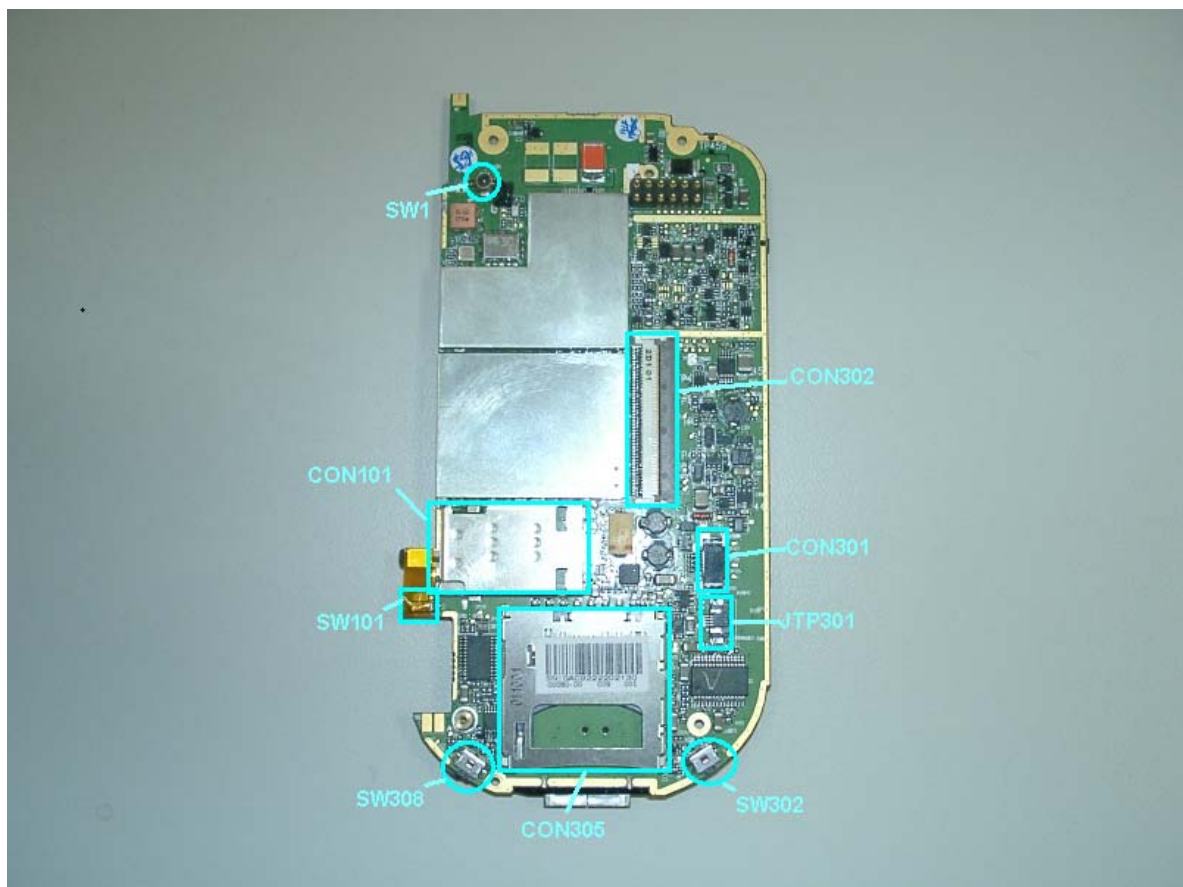
Obverse side

1. Power Button Switch (SW301)
2. Contacts Button Switch (SW306)
3. Record Button Switch (SW303)
4. Calendar Button Switch (SW304)
5. Send Button Switch (SW103)
6. Navigation Button Switch (SW307)
7. End Button Switch (SW102)
8. Cradle Connector (CON303)
9. Audio Jack (CON306)



Reverse side

1. Antenna Switch (SW1)
2. LCM Connector (CON302)
3. Touch Panel Connector (CON301)
4. Backlight Connector (JTP301)
5. SIM Card Connector (CON101)
6. SIM Detector Switch (SW101)
7. Battery On/Off Switch (SW308)
8. Reset Switch (SW302)
9. SD Card Connector (CON305)



B. Problem Identification & Troubleshooting

I. Basic Repair Instructions for Component Replacement:

Step 1. Place the solder-proof tape to cover the surrounding area of the components which being replaced.

Warning : ***DO NOT** overheat the tape and components to avoid the tape melted and make the component damage.*

Step 2 Use Heater Gun (HAKO850B, set the temperature between 350°C , Air Speed 3~5) to remove the components.

Step 3 It has to wait the temperature cool down before the damaged components been removed. Or, the others components could be gone when the solder-proof tape been taken off.

Step 4 After the damaged components has been replaced, clean the surroundings for solder and flux residues.

II. Main Board: The following items have been allowed to replace for Main Board

1. Power Button Switch (SW301)

1.1 If the switch is broken, warp or doesn't work properly (measure by scope), replace it.

1.2 If the switch still doesn't work properly after replace new one, please replace the M/B.

2. Contacts Button Switch (SW306)

2.1 If the switch is broken, warp or doesn't work properly (measure by scope), replace it.

2.2 If the switch still doesn't work properly after replace new one, please replace the M/B.

3. Record Button Switch (SW303)

3.1 If the switch is broken, warp or doesn't work properly (measure by scope), replace it.

3.2 If the switch still doesn't work properly after replace new one, please replace the M/B.

4. Calendar Button Switch (SW304)

- 4.1 If the switch is broken, warp or doesn't work properly (measure by scope), replace it.
- 4.2 If the switch still doesn't work properly after replace new one, please replace the M/B.

5. Send Button Switch (SW103)

- 5.1 If the switch is broken, warp or doesn't work properly (measure by scope), replace it.
- 5.2 If the switch still doesn't work properly after replace new one, please replace the M/B.

6. Navigation Button Switch (SW307)

- 6.1 If the switch is broken, warp or doesn't work properly (measure by scope), replace it.
- 6.2 If the switch still doesn't work properly after replace new one, please replace the M/B.

7. End Button Switch (SW102)

- 7.1 If the switch is broken, warp or doesn't work properly (measure by scope), replace it.
- 7.2 If the switch still doesn't work properly after replace new one, please replace the M/B.

8. Cradle Connector (CON303)

- 8.1 If the switch is broken, warp or doesn't work properly (measure by scope), replace it.
- 8.2 If the switch still doesn't work properly after replace new one, please replace the M/B.

9. Audio Jack (CON306)

- 9.1 If the switch is broken, warp or doesn't work properly (measure by scope), replace it.
- 9.2 If the switch still doesn't work properly after replace new one, please replace the M/B.

10. Antenna Switch (SW1)

- 10.1 If the switch is broken, warp or doesn't work properly (measure by scope), replace it.
- 10.2 If the switch still doesn't work properly after replace new one, please replace

the M/B.

11. LCM Connector (CON302)

11.1 If the switch is broken, warp or doesn't work properly (measure by scope), replace it.

11.2 If the switch still doesn't work properly after replace new one, please replace the M/B.

12. Touch Panel Connector (CON301)

12.1 If the switch is broken, warp or doesn't work properly (measure by scope), replace it.

12.2 If the switch still doesn't work properly after replace new one, please replace the M/B.

12.3 Place solder-proof tape on JTP301 to prevent it melted when using heater gun to remove CON301.

13. Backlight Connector (JTP301)

13.1 If the switch is broken, warp or doesn't work properly (measure by scope), replace it.

13.2 If the switch still doesn't work properly after replace new one, please replace the M/B.

13.3 Place solder-proof tape on CON301 to prevent it melted when using heater gun to remove JTP301.

14. SIM Card Connector (CON101)

14.1 If the switch is broken, warp or doesn't work properly (measure by scope), replace it.

14.2 If the switch still doesn't work properly after replace new one, please replace the M/B.

15. SIM Detector Switch (SW101)

15.1 If the switch is broken, warp or doesn't work properly (measure by scope), replace it.

15.2 If the switch still doesn't work properly after replace new one, please replace the M/B.

15.3 Use solder iron only to replace new component. DO NOT use Heater Gun to remove component to prevent next connector melted.

16. Battery On/Off Switch (SW308)

16.1 If the switch is broken, warp or doesn't work properly (measure by scope), replace it.

16.2 If the switch still doesn't work properly after replace new one, please replace the M/B.

17. Reset Switch (SW302)

17.1 If the switch is broken, warp or doesn't work properly (measure by scope), replace it.

17.2 If the switch still doesn't work properly after replace new one, please replace the M/B.

18. SD Card Connector (CON305)

18.1 If the switch is broken, warp or doesn't work properly (measure by scope), replace it.

18.2 If the switch still doesn't work properly after replace new one, please replace the M/B.

B. Wallaby Series Spare Parts List For Board Level Repair

Item	Description	Qty	Location
36H00005-00	SWITCH, BUTTON, EVQPUM50K, MATSUSHITA	1	Navigation Switch (SW307)
36H00006-00	SWITCH, SMK, ANTENNA SWITCH, CRS5001-1003	1	Antenna Switch (SW1)
36H00014-00	AUDIO JACK, φ 2.5mm, HOSIDEN HSJ1816-019010	1	Audio Jack (CON306)
36H00017-00	SWITCH, DETECTOR, VER. TYPE, ABC2133P, MATSUSHITA	1	SIM Switch (SW101)
36H00024-10	SWITCH, EVQPLHA15, MATSUSHITA	4	Hot Key (SW102, 103, 304, 306)
36H00034-00	SWITCH, W/BOSS, EVQPUD02K, MATSUSHITA	2	Battery On/Off Switch (SW308) Reset Switch (SW302)
36H10025-00	SWITCH, BUTTON, EVQPUM02K, MATSUSHITA	2	Power Button Switch (SW301) Record Button Switch (SW303)
75H00096-00	CONNECTOR, FPC TO B 4PIN 0.5mm, SFV4R-2STXX, FCI	1	Backlight Connector (JTP301)
75H00098-00	CONNECTOR-M, B-B, SMD, 0.5mm, 22P, AXR512286801, MATSUSHITA	1	Cradle Connector (CON303)
75H00106-00	CON, B-TO-FPC, FH16L-90S-0,3SHW (05), PITCH=0.6	1	LCM Connector (CON302)
75H00133-00	CONNECTOR, SD CARD, REVERSE, SMT, AXA223021, MATSUSHITA	1	SD Card Connector (CON305)
75H00171-00	CONNECTOR, SIM, H=1.5mm, ASE065-AOG15, PII	1	SIM Card Connector (CON101)
75H22008-12	CONNECTOR-F, T/P FPC, R-ANGLE, 0.5mm, 9P	1	Touch Panel Connector (CON301)

72H00219-00	SIM DOOR SWITCH SHIELDING	1	SHIELDING
-------------	---------------------------	---	-----------